

UPLAND PORTIONS
OF LOTS

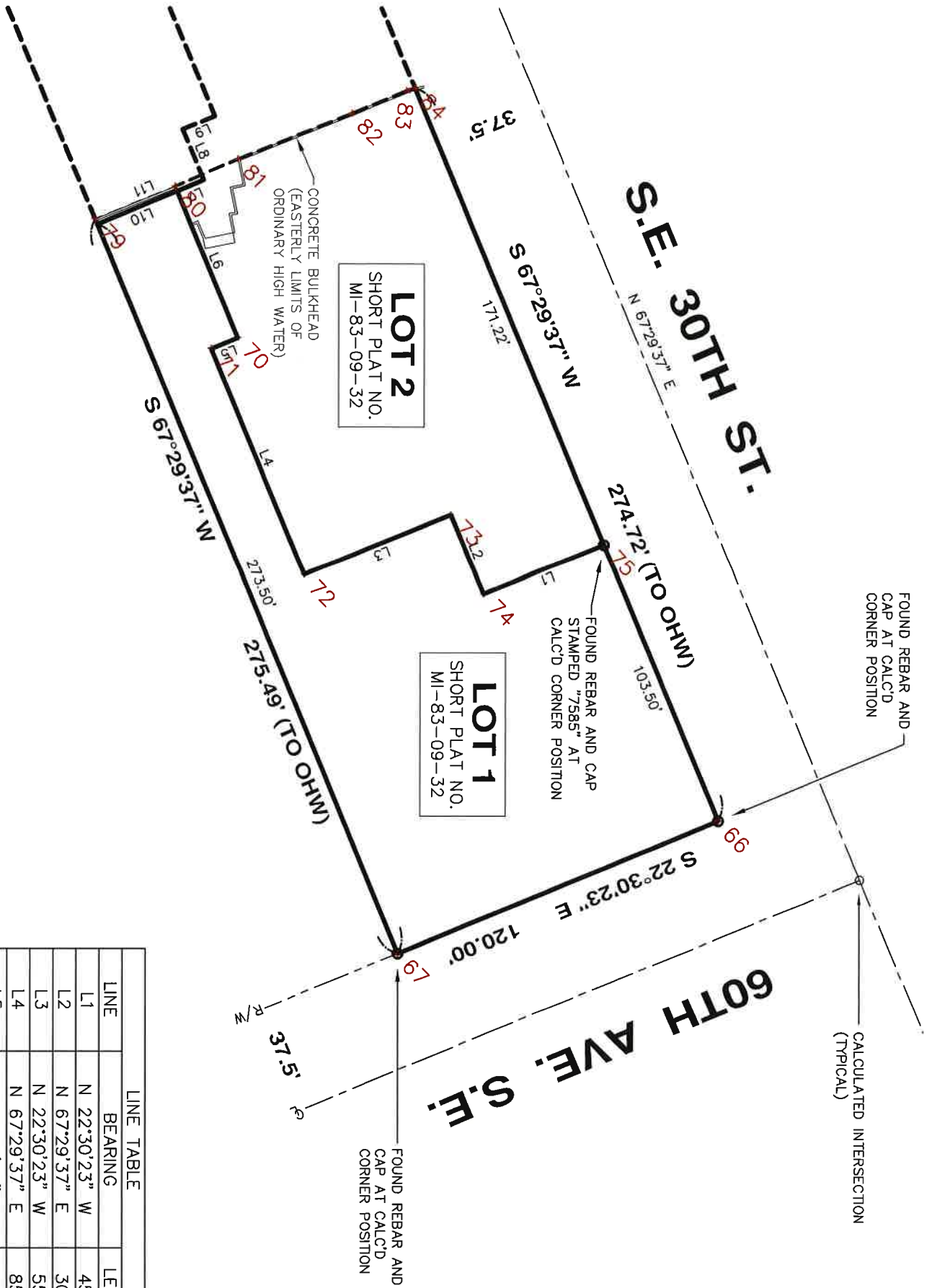
Job: DOUG ROSEN - 3009 60TH AVE SE
NE1/4 11-24-4

By: CHADWICK & WINTERS

Point	Direction	Distance	Northing	Easting	Elevation
LOT 1					
Start					
66	PROP.COR		216119.45547	1290311.87260	0.000
IN	S 22°30'23.0" E	120.000			
67	PROP.COR		216008.59500	1290357.80700	0.000
IN	S 67°29'37.0" W	275.493			
79	UPLAND BOUNDARY		215903.14000	1290103.29630	0.000
IN	N 21°59'50.6" W	30.016			
80	UPLAND BOUNDARY		215930.97130	1290092.05320	0.000
IN	N 77°30'22.5" E	57.604			
71	PROP.COR		215943.43290	1290148.29292	0.000
IN	N 67°29'37.0" E	85.000			
72	PROP.COR		215975.96975	1290226.81905	0.000
IN	N 22°30'23.0" W	55.000			
73	PROP.COR		216026.78077	1290205.76579	0.000
IN	N 67°29'36.9" E	30.000			
74	PROP.COR		216038.26437	1290233.48090	0.000
IN	N 22°30'23.0" W	45.000			
75	PROP.COR		216079.83703	1290216.25550	0.000
IN	N 67°29'36.9" E	103.500			
66	PROP.COR		216119.45547	1290311.87260	0.000
Area = 17792.5971 Sq. Feet or 0.4085 Acres					

LOT 2					
Start					
75	PROP.COR		216079.83703	1290216.25550	0.000
IN	S 22°30'23.0" E	45.000			
74	PROP.COR		216038.26437	1290233.48090	0.000
IN	S 67°29'36.9" W	30.000			
73	PROP.COR		216026.78077	1290205.76579	0.000
IN	S 22°30'23.0" E	55.000			
72	PROP.COR		215975.96975	1290226.81905	0.000
IN	S 67°29'37.0" W	85.000			
71	PROP.COR		215943.43290	1290148.29292	0.000
IN	N 22°30'23.1" W	10.000			
70	PROP.COR		215952.67127	1290144.46505	0.000
IN	S 67°30'32.7" W	56.726			
80	UPLAND BOUNDARY		215930.97130	1290092.05320	0.000
IN	N 23°20'22.5" W	23.674			
81	UPLAND BOUNDARY		215952.70820	1290082.67400	0.000
IN	N 21°58'41.6" W	42.713			
82	UPLAND BOUNDARY		215992.31730	1290066.68840	0.000
IN	N 22°01'32.4" W	21.098			
83	UPLAND BOUNDARY		216011.87570	1290058.77610	0.000
IN	N 16°12'18.0" W	2.519			
84	UPLAND BOUNDARY		216014.29500	1290058.07300	0.000
IN	N 67°29'37.0" E	171.223			
75	PROP.COR		216079.83703	1290216.25550	0.000
Area = 14961.4902 Sq. Feet or 0.3435 Acres					

LAKE WASHINGTON



LINE TABLE		
LINE	BEARING	LENGTH
L1	N 22°30'23" W	45.00'
L2	N 67°29'37" E	30.00'
L3	N 22°30'23" W	55.00'
L4	N 67°29'37" E	85.00'
L5	S 22°30'23" E	10.00'
L6	N 67°29'37" E	55.00'
L7	N 22°30'23" W	10.00'
L8	N 67°29'37" E	19.00'
L9	S 22°30'23" E	12.00'
L10	N 22°30'23" W	30.00'
L11	S 22°30'23" E	40.00'